



# Martha Kindergarten PATRIZIA, GELC Govindpur, India

Affiliated to MARTHA KINDERGARTEN Program of GEL Church in Chotanagpur and Assam  
G.E.L. Church Compound, Govindpur – 835234, Karra – Khunti, Jharkhand



## PROJECT PROGRESS REPORT 1 (MAR-JUL 2020)

### Brief Documentation of Construction Works

Inauguration Prayer for Construction work offered by Diocese Bishop Rt. Rev. Joseph Sanga together with committee & congregation/parish members on 2<sup>nd</sup> of March 2020.

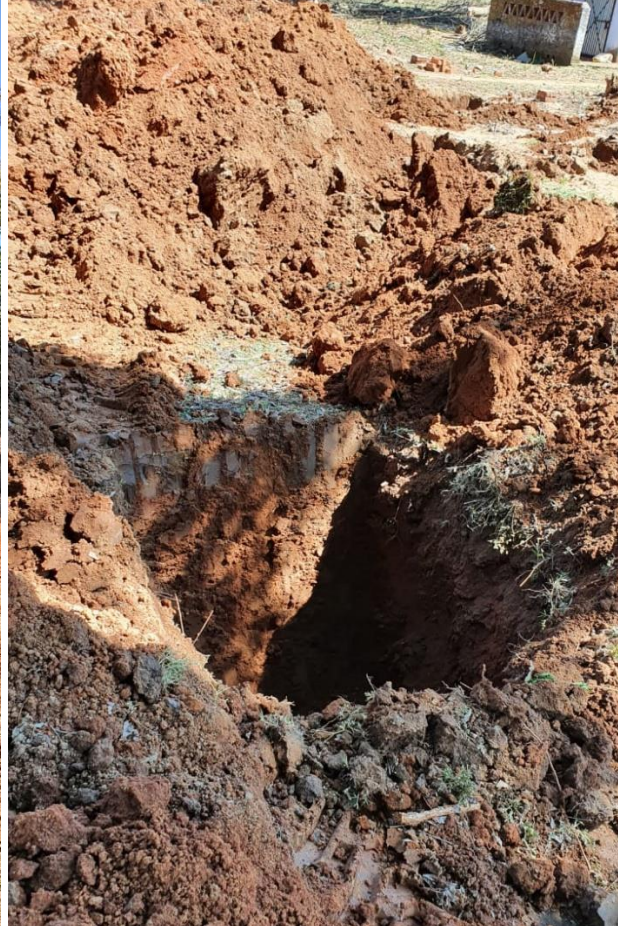


The work started on 3<sup>rd</sup> of March 2020.



The 1<sup>st</sup> phase was completed on 8<sup>th</sup> of March and a cheque over Rs. 13,49,415/- was issued on 9<sup>th</sup> of March 2020 and handed over to Mr. Kiran Aind of Shanti Construction.

- a. The work included necessary tree cutting and shifting of electricity pole on the church compound.
- b. In absence of reliable local power supply, the contractor arranged for a rented generator (on his own costs).



Phase 2 started on 9<sup>th</sup> of March 2020.

After Janta Curfew on 22<sup>nd</sup> of March, local people advised workers to stop the work. So, the work had to be interrupted from 23<sup>rd</sup> of March 2020. After that the official lockdown came into effect.

Up to that time, works of 2<sup>nd</sup> phase was in process and about to be completed.



Due to the disruption of work which lasted from 23<sup>rd</sup> of March to 31<sup>st</sup> of May 2020, extra work occurred after the continuation from 1<sup>st</sup> of June, such as cleaning of work site, removing of soil, etc. which had filled the foundation holes and others.



Meeting and talk with Mr. Kiran Aind, Secretary Mukut Bodra and Liaison Officer Alexander Nitschke on 4<sup>th</sup> of June 2020 to discuss about the details of further procedures etc.

- Planning the visit to project site on 5<sup>th</sup> of June 2020 for inspection of progress at the completion of 2<sup>nd</sup> phase.



Inspection visit at work site by Contractor, Secretary & Liaison Officer together with Chairman and other committee members on 05.06.2020.





Phase 2 completed on 8<sup>th</sup> of June, after inspection on site with Secretary, Chairman, builder and other PMC members, cheque for payment of 2<sup>nd</sup> phase over Rs. 13,13,413/- issued on 08.06.2020 and handed over to Mr. Kiran Aind of Shanti Construction.



Phase 3 started on 09.06.2020.





Meeting and talk with Mr. Kiran Aind, Secretary Mukut Bodra, Liaison Officer Alexander Nitschke and Architect team Apurb & Associates on 23.06.2020 at Ranchi to discuss about details etc.

Due to the change of location for construction site, the detailed planning and drawings for the entrance area of the main building had to be adjusted accordingly which was discussed in detail at the Architect Office. Further, the techniques for the exposed brick work of outer walls was discussed in detail.



Meeting of the Project Management Committee/Governing Body together with the Contractor at the work site on 3<sup>rd</sup> of July 2020.

- Reporting on the work progress
- Talk about finances
  - efforts of the Parish/Congregations for raising of local contribution
  - need to request Gossner Mission for transfer of 2<sup>nd</sup> installment including amount for Training in India
- urgent need to carry out the deep boring for water supply of the Kindergarten and identification of exact location









## Detailed Documentation of construction work (commenced on 03.03.2020)

### PHASE I (03.-06.03.2020)

Work carried out in Phase I according to Architect's specification:

Sl. No.	Item No. as per tender proposal (Architect's specification)	Work Description
1	1	Earthwork in excavation in foundation trenches in ordinary soil (vide classification of soil item – A) and disposal of excavated earth as obtained to a distance upto 50m, including all lifts, levelling, ramming the foundation trenched, removing roots of trees, shrubs all complete as per approved design, building specification and direction of E/I.
2	2	Extra for earthwork in hard soil as per specification and direction of E/I.
3	3	Earth filling in foundation trenches and plinth in layers not exceeding 150 mm thick well watered, rammed, fully compacted and fine dressed with earth obtained after cutting within a lead of 50 m and lift of 1.5 m all complete as per building specification and direction of E/I (Mode of measurement compacted volume).
4	4	Providing coarse clean sand in filling in foundation trenches or in plinth including ramming and watering in layers not exceeding 150mm thick with all leads and lifts including cost of all materials, labour, royalty and taxes all complete as per building specification and direction of E/I (Mode of measurement compacted volume).
5	5	Providing designation 75 B one brick flat soiling joints filled with local sand including cost of watering, taxes, royalty all complete as per building specification and direction of E/I.
6	6	Providing P.C.C. M-100 with nominal mix of (1:3:6) in foundation with approved quality of stone metal grade – III (50mm to 25 mm size) clean coarse sand of F.M. 2.5 to 3 including screening, shuttering, mixing cement concrete in mixer and placing in position vibrating, striking, curing, taxes and royalty all complete as per building specification and direction of E/I.
7	37	Providing R.C.C. M-200 with nominal mix of (1:1.5:3) in foundation and plinth with approved quality of stone chips 20mm to 6mm size graded and clean coarse sand of F.M. 2.5 to 3 including screening, centering, mixing, taxes and royalty all complete as per building specification and direction of E/I.
8	38	Providing for steel reinforcement of 8mm, 10mm, 12mm, 16mm, 20mm and 25mm dia rods as per approved design and drawing excluding carriage of M.S. bars to work site, cutting, bending and binding with annealed wire with cost of wire, removal of rust placing the rods in position all complete as per building specification and direction of E/I. Taking 8mm TMT FE 500 (only valid for SAIL & TATA STEEL).
9	39	Making plinth protection 50 mm thick of cement concrete 1:3:6 over 75 mm thick bed of dry brick ballast 40 mm nominal size well rammed and consolidated and grouted with fine sand, including necessary excavation, levelling & dressing & finishing the top smooth.

## **PHASE II (10.03.-08.06.2020)**

- Phase 2 started on 10<sup>th</sup> of March 2020.

After Janta Curfew on 22<sup>nd</sup> of March, local people advised workers to stop the work. So, the work had to be interrupted from 23<sup>rd</sup> of March 2020. After that the official lockdown came into effect. Up to that time, works of 2<sup>nd</sup> phase was in process and about to be completed.

Due to the disruption of work which lasted from 23<sup>rd</sup> of March to 31<sup>st</sup> of May 2020, extra work occurred after the continuation from 1<sup>st</sup> of June, such as cleaning of work site, removing of soil which had filled the foundation holes and others, etc..

Work carried out in Phase II according to Architect's specification:

<b>Sl. No.</b>	<b>Item No. as per tender proposal (Architect's specification)</b>	<b>Work Description</b>
1	7	Providing R.C.C. M-200 with nominal mix of (1:1.5:3) in foundation and plinth with approved quality of stone chips 20mm to 6mm size graded and clean coarse sand of F.M. 2.5 to 3 including screening, centering, mixing, taxes and royalty all complete as per building specification and direction of E/I.
2	8	Providing R.C.C. M-200 with nominal mix of (1:1.5:3) in columns with approved quality of stone chips 20 mm to 6 mm size graded and clean coarse sand of F.M. 2.5 to 3 including screening, shuttering, mixing cement concrete in mixer and placing in position, vibrating, striking, curing (but excluding the cost of reinforcement) taxes and royalty all complete as per building specification and direction of E/I.
3	9	Providing R.C.C. M-200 with nominal mix of (1:1.5:3) in band at plinth level with approved quality of stone chips 20 mm to 6 mm size graded and clean coarse sand of F.M. 2.5 to 3 including screening, shuttering, mixing cement concrete in mixer and placing in position, vibrating, striking, curing (but excluding the cost of reinforcement) taxes and royalty all complete as per building specification and direction of E/I.
4	10	Providing designation 75A brick work in C.M. (1:6) in foundation and plinth with approved quality of clean coarse sand of F.M. 2 to 2.5 including providing 10mm thick mortar joints, cost of screening materials, raking out joints to 15mm depth curing, taxes and royalty all complete as per building specification and direction of E/I.
5	11	Providing 25mm thick damp proof course with cement concrete M-150 with nominal mix of (1:2:4) with approved quality of stone chips of 20 mm to 6 mm size graded and clean coarse sand of F.M. 2.5 to 3 including screening, shuttering and mixing cement concrete in mixer with 5% cico or any other approved water proofing compound and placing in position, striking curing, taxes and royalty all complete as per building specification and direction of E/I.
6	12	Providing designation 75 A brick work in C.M. (1:6) in superstructure with approved quality of clean coarse sand of F.M. 2 to 2.5 including providing 10 mm thick mortar joints cost of screening materials, scaffolding, raking out joints to 15 mm depth curing, taxes and royalty all complete as per building specification and direction of E/I.

**PHASE III (09.06.2020-??.07.2020)**

Work carried out in Phase III according to Architect's specification:

Sl. No.	Item No. as per tender proposal (Architect's specification)	Work Description
1	13	Providing designation 75 A brick work in C.M. (1:6) in superstructure with approved quality of clean coarse sand of F.M. 2 to 2.5 including providing 10mm thick mortar joints, cost of screening materials, scaffolding, raking out joints to 15 mm depth curing, taxes and royalty all complete as per building specification and direction of E/I.
2	14	Providing designation 125 mm thick reinforced designation 75 A brick work in C.M (1:4) in superstructure with approved quality of clean coarse sand of F.M. 2 to 2.5 including the cost of screening, carriage of materials, scaffolding, raking out joints to 15 mm depth, curing, taxes and royalty (but excluding the cost of reinforcement) all complete as per building specification and direction of E/I.
3	15	Providing R.C.C. M-200 with nominal mix of (1:1.5:3) in lintel with approved quality of stone chips 20mm to 6 mm size graded and clean coarse sand of FM. 2.5 to 3 including screening, shuttering, mixing cement concrete in mixer and placing in position, vibrating, striking, curing (but excluding the cost of reinforcement) taxes and royalty all complete as per building specification and direction of E/I.
4	16	Providing R.C.C.M – 200 with nominal mix of (1:1.5:3) in beam with approved quality of stone chips 20 mm to 6 mm size graded and clean coarse sand of F.M 2.5 to 3 including screening, centering, shuttering, mixing cement concrete in mixer and placing in position, vibrating, striking, curing *but excluding the cost of reinforcement) taxes and royalty all complete as per building specification and direction of E/I.
5	20	Granite top in kitchen.
6	21	Supplying, fitting and fixing M.S. grill made of 20x6mm M.S. flat as per approved design and drawing, properly fabricated with joints continuous fillet welded and finished smooth carriage of grill to work site, hoisting as per building specification and direction of E/I (where materials is not supplied by the deptt.).
7	32	Supplying, fitting and fixing 35 mm thick solid core type decorative single leaf flush door ... all complete as per building specification and direction of E/I.

Ranchi, 16<sup>th</sup> of July 2020

*Mukut Bodra*

Mukut Bodra (Secretary)